

Lesson plan – 2. Chord notes - Triads

Lesson objectives	Chord notes - Triads
Activity 1	Learn line 1 from the chords sheet (either Em7, Dm7 or Bm7)
Activity 2	Learn line 2 from the chords sheet (either C7, Bb7 or G7)
Activity 3	Learn line 3 from the chords sheet (either F#m7(b5), Em7(b5) or C#m7(b5))
Activity 4	Learn line 4 from the chords sheet (either B7(b9), Am7(b9) or F#7(b9))
Activity 5	Learn line 5 from the chords sheet (either C6 & Am7, Bb6 & Gm7 or G6 & Em7)
Activity 6	Learn line 6 from the chords sheet (either Dm7 & G7, Cm7 & F7 or Am7 & D7)
Activity 7	Learn line 7 from the chords sheet (either C6, Bb6 or G6)
Activity 8	Practice along playing all the changes with your favourite tempo backing track, playing the triads as in the lesson.

How to make great progress!

Make sure you know the chord changes REALLY WELL before moving onto the backing track, if not, be ready for a whole lot of frustration.

There are only 7 lines to internalise, possible to practice just 1 everyday for a week. By the end of 7 days, you should be an expert!

Good luck.

PS – If you want to, try and play the chord you have learnt (REALLY WELL) with the backing track, only playing THAT chord!

BERNIE'S TUNE - LESSON 2

BASS CLEF

D^{MIN7} **B^{b7}**

E^{MIN7(b5)} **A^{7(b9)}** **D^{MIN7}** **E^{MIN7(b5)}** **A^{7(b9)}**

D^{MIN7} **B^{b7}**

9

E^{MIN7(b5)} **A^{7(b9)}** **D^{MIN7}** **C^{MIN7}** **F⁷**

B^{b6} **G^{MIN7}** **C^{MIN7}** **F⁷** **B^{b6}** **G^{MIN7}** **C^{MIN7}** **F⁷**

B^{b6} **G^{MIN7}** **C^{MIN7}** **F⁷** **B^{b6}** **E^{MIN7(b5)}** **A^{7(b9)}**

D^{MIN7} **B^{b7}**

25

E^{MIN7(b5)} **A^{7(b9)}** **D^{MIN7}** **E^{MIN7(b5)}** **A^{7(b9)}**

BERNIE'S TUNE - LESSON 2

B FLAT

E_{MIN}⁷ **C⁷**

F#_{MIN}^{7(b5)} **B^{7(b9)}** **E_{MIN}⁷** **F#_{MIN}^{7(b5)}** **B^{7(b9)}**

E_{MIN}⁷ **C⁷**

9

F#_{MIN}^{7(b5)} **B^{7(b9)}** **E_{MIN}⁷** **D_{MIN}⁷** **G⁷**

C⁶ **A_{MIN}⁷** **D_{MIN}⁷** **G⁷** **C⁶** **A_{MIN}⁷** **D_{MIN}⁷** **G⁷**

C⁶ **A_{MIN}⁷** **D_{MIN}⁷** **G⁷** **C⁶** **F#_{MIN}^{7(b5)}** **B^{7(b9)}**

E_{MIN}⁷ **C⁷**

25

F#_{MIN}^{7(b5)} **B^{7(b9)}** **E_{MIN}⁷** **F#_{MIN}^{7(b5)}** **B^{7(b9)}**

BERNIE'S TUNE - LESSON 2

C

D^{MIN7} **B^{b7}**

E^{MIN7(b5)} **A^{7(b9)}** **D^{MIN7}** **E^{MIN7(b5)}** **A^{7(b9)}**

D^{MIN7} **B^{b7}**

9

E^{MIN7(b5)} **A^{7(b9)}** **D^{MIN7}** **C^{MIN7}** **F⁷**

B^{b6} **G^{MIN7}** **C^{MIN7}** **F⁷** **B^{b6}** **G^{MIN7}** **C^{MIN7}** **F⁷**

B^{b6} **G^{MIN7}** **C^{MIN7}** **F⁷** **B^{b6}** **E^{MIN7(b5)}** **A^{7(b9)}**

D^{MIN7} **B^{b7}**

25

E^{MIN7(b5)} **A^{7(b9)}** **D^{MIN7}** **E^{MIN7(b5)}** **A^{7(b9)}**

BERNIE'S TUNE - LESSON 2

E FLAT

B^{MIN}7 **G⁷**

C#^{MIN}7(b5) **F#7(b9)** **B^{MIN}7** **C#^{MIN}7(b5)** **F#7(b9)**

B^{MIN}7 **G⁷**

C#^{MIN}7(b5) **F#7(b9)** **B^{MIN}7** **A^{MIN}7** **D⁷**

G^b **E^{MIN}7** **A^{MIN}7** **D⁷** **G^b** **E^{MIN}7** **A^{MIN}7** **D⁷**

G^b **E^{MIN}7** **A^{MIN}7** **D⁷** **G^b** **C#^{MIN}7(b5)** **F#7(b9)**

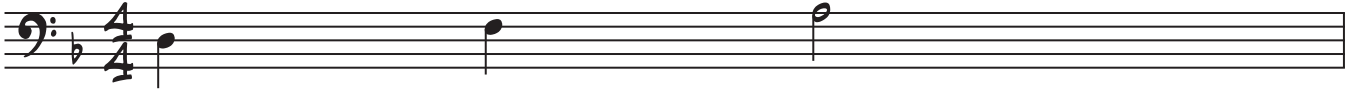
B^{MIN}7 **G⁷**

C#^{MIN}7(b5) **F#7(b9)** **B^{MIN}7** **C#^{MIN}7(b5)** **F#7(b9)**

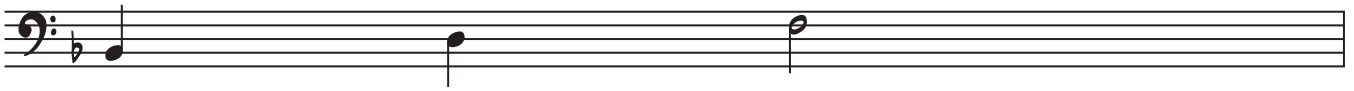
BERNIE'S TUNE - LESSON 2 - CHORDS

BASS CLEF

D^{MIN}7

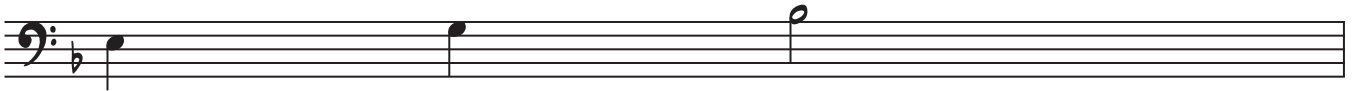


B^b7

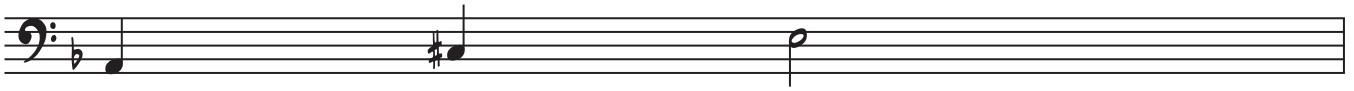


2

E^{MIN}7(b5)



A⁷(b9)



4

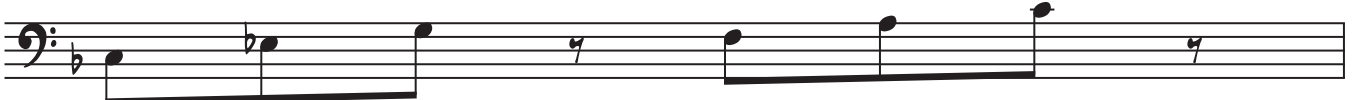
B^b6

G^{MIN}7



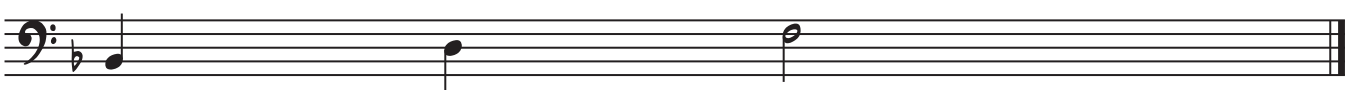
C^{MIN}7

F⁷



6

B^b6



7

BERNIE'S TUNE - LESSON 2

BASS CLEF

D^{MIN7} **B^{b7}**

E^{MIN7(b5)} **A^{7(b9)}** **D^{MIN7}** **E^{MIN7(b5)}** **A^{7(b9)}**

D^{MIN7} **B^{b7}**

9

E^{MIN7(b5)} **A^{7(b9)}** **D^{MIN7}** **C^{MIN7}** **F⁷**

B^{b6} **G^{MIN7}** **C^{MIN7}** **F⁷** **B^{b6}** **G^{MIN7}** **C^{MIN7}** **F⁷**

B^{b6} **G^{MIN7}** **C^{MIN7}** **F⁷** **B^{b6}** **E^{MIN7(b5)}** **A^{7(b9)}**

D^{MIN7} **B^{b7}**

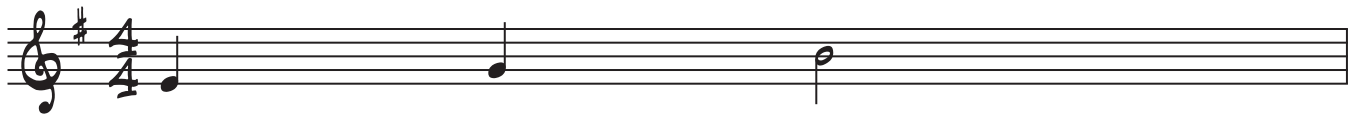
25

E^{MIN7(b5)} **A^{7(b9)}** **D^{MIN7}** **E^{MIN7(b5)}** **A^{7(b9)}**

BERNIE'S TUNE - LESSON 2 - CHORDS

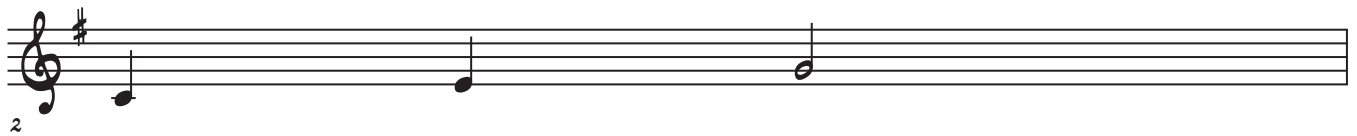
B FLAT

E_{MIN}⁷



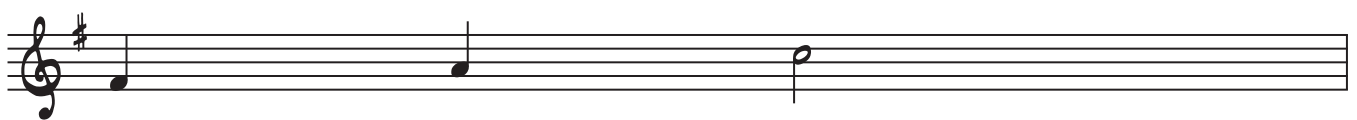
A musical staff in treble clef with a key signature of one sharp (F#) and a 4/4 time signature. The staff contains three notes: a quarter note on G4, a quarter note on B4, and a half note on D5.

C⁷



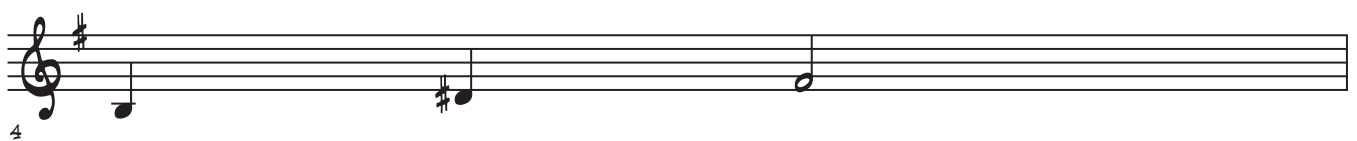
A musical staff in treble clef with a key signature of one sharp (F#) and a 4/4 time signature. The staff contains three notes: a quarter note on C4, a quarter note on E4, and a half note on G4. A finger number '2' is written below the first note.

F#_{MIN}^{7(b5)}



A musical staff in treble clef with a key signature of one sharp (F#) and a 4/4 time signature. The staff contains three notes: a quarter note on F#4, a quarter note on A4, and a half note on C5.

B^{7(b9)}



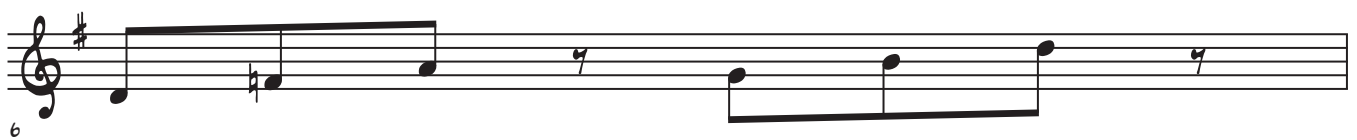
A musical staff in treble clef with a key signature of one sharp (F#) and a 4/4 time signature. The staff contains three notes: a quarter note on B4, a quarter note on D5, and a half note on F#5. A finger number '4' is written below the first note.

C⁶ **A_{MIN}⁷**



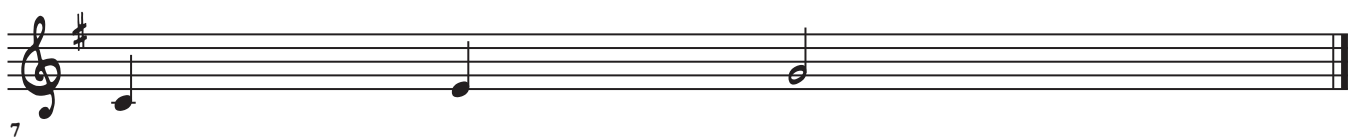
A musical staff in treble clef with a key signature of one sharp (F#) and a 4/4 time signature. The staff contains two measures. The first measure has a quarter note on C4, a quarter note on E4, and a half note on G4. The second measure has a quarter note on A4, a quarter note on C5, and a half note on E5. Finger numbers '7' are written below the first and last notes of each measure.

D_{MIN}⁷ **G⁷**



A musical staff in treble clef with a key signature of one sharp (F#) and a 4/4 time signature. The staff contains two measures. The first measure has a quarter note on D4, a quarter note on F#4, and a half note on A4. The second measure has a quarter note on G4, a quarter note on B4, and a half note on D5. Finger numbers '6' and '7' are written below the first and last notes of each measure.

C⁶



A musical staff in treble clef with a key signature of one sharp (F#) and a 4/4 time signature. The staff contains three notes: a quarter note on C4, a quarter note on E4, and a half note on G4. A finger number '7' is written below the first note.

BERNIE'S TUNE - LESSON 2

B FLAT

E_{MIN}⁷ **C⁷**

F#_{MIN}^{7(b5)} **B^{7(b9)}** **E_{MIN}⁷** **F#_{MIN}^{7(b5)}** **B^{7(b9)}**

E_{MIN}⁷ **C⁷**

F#_{MIN}^{7(b5)} **B^{7(b9)}** **E_{MIN}⁷** **D_{MIN}⁷** **G⁷**

C⁶ **A_{MIN}⁷** **D_{MIN}⁷** **G⁷** **C⁶** **A_{MIN}⁷** **D_{MIN}⁷** **G⁷**

C⁶ **A_{MIN}⁷** **D_{MIN}⁷** **G⁷** **C⁶** **F#_{MIN}^{7(b5)}** **B^{7(b9)}**

E_{MIN}⁷ **C⁷**

F#_{MIN}^{7(b5)} **B^{7(b9)}** **E_{MIN}⁷** **F#_{MIN}^{7(b5)}** **B^{7(b9)}**

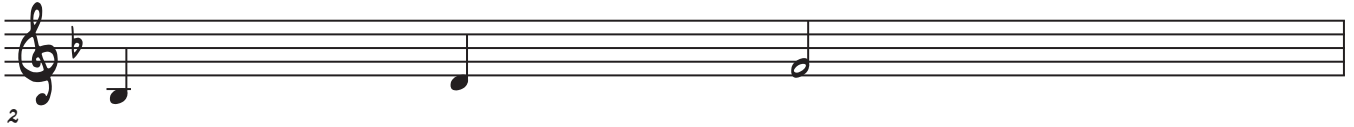
BERNIE'S TUNE - LESSON 2 - CHORDS

C

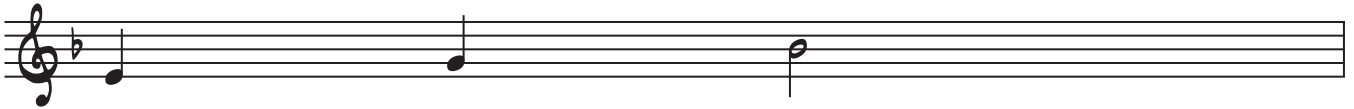
D^{MIN7}



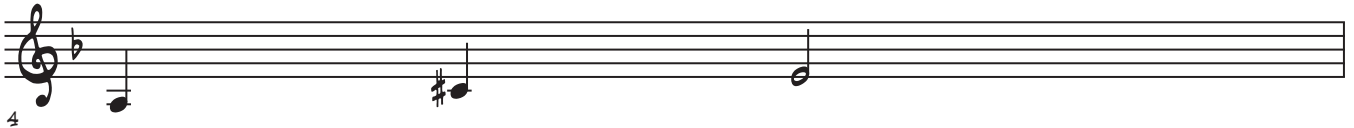
B^{b7}



E^{MIN7(b5)}



A^{7(b9)}



B^{b6}

G^{MIN7}

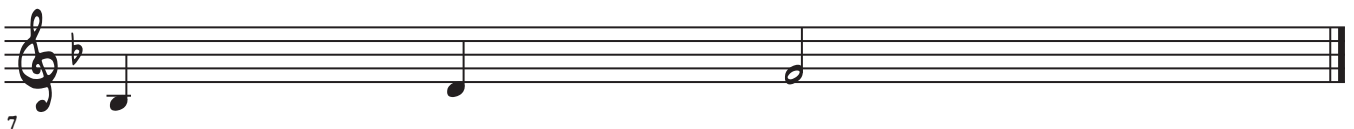


C^{MIN7}

F⁷



B^{b6}



BERNIE'S TUNE - LESSON 2

C

D^{MIN7} **B^{b7}**

E^{MIN7(b5)} **A^{7(b9)}** **D^{MIN7}** **E^{MIN7(b5)}** **A^{7(b9)}**

D^{MIN7} **B^{b7}**

E^{MIN7(b5)} **A^{7(b9)}** **D^{MIN7}** **C^{MIN7}** **F⁷**

B^{b6} **G^{MIN7}** **C^{MIN7}** **F⁷** **B^{b6}** **G^{MIN7}** **C^{MIN7}** **F⁷**

B^{b6} **G^{MIN7}** **C^{MIN7}** **F⁷** **B^{b6}** **E^{MIN7(b5)}** **A^{7(b9)}**


D^{MIN7} **B^{b7}**

E^{MIN7(b5)} **A^{7(b9)}** **D^{MIN7}** **E^{MIN7(b5)}** **A^{7(b9)}**

BERNIE'S TUNE - LESSON 2 - CHORDS

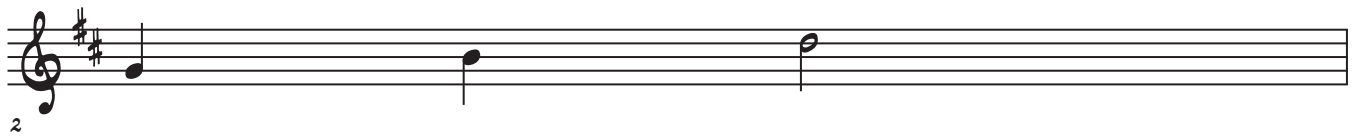
E FLAT

B^{MIN}7



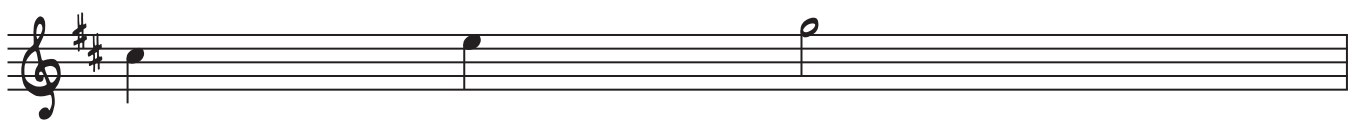
A musical staff in treble clef with a key signature of two sharps (F# and C#) and a 4/4 time signature. The staff contains three notes: B2 (quarter note), D3 (quarter note), and F#3 (half note).

G⁷



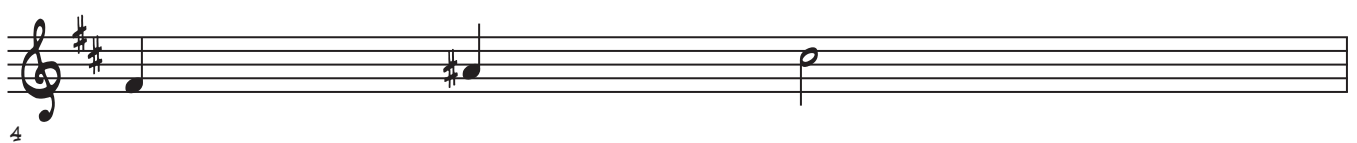
A musical staff in treble clef with a key signature of two sharps (F# and C#). The staff contains three notes: G2 (quarter note), B2 (quarter note), and D#3 (half note). A '2' is written below the first note.

C#^{MIN}7(b5)



A musical staff in treble clef with a key signature of two sharps (F# and C#). The staff contains three notes: C#3 (quarter note), E3 (quarter note), and G#3 (half note).

F#7(b9)




A musical staff in treble clef with a key signature of two sharps (F# and C#). The staff contains three notes: F#3 (quarter note), A#3 (quarter note), and C#4 (half note). A '4' is written below the first note.

G^b **E^{MIN}7**



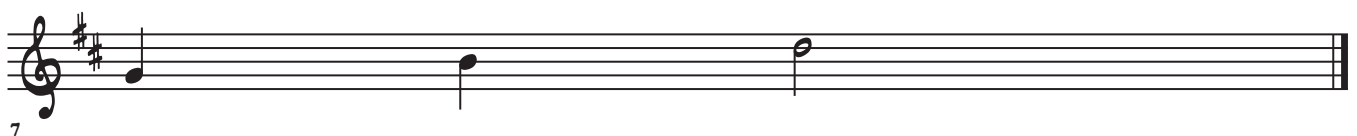
A musical staff in treble clef with a key signature of two sharps (F# and C#). The staff contains six notes: G2 (quarter), A2 (quarter), B2 (quarter), G2 (quarter), E3 (quarter), and F#3 (quarter). There are rests between the third and fourth notes, and between the fifth and sixth notes.

A^{MIN}7 **D⁷**



A musical staff in treble clef with a key signature of two sharps (F# and C#). The staff contains six notes: A2 (quarter), B2 (quarter), C#3 (quarter), A2 (quarter), D3 (quarter), and E3 (quarter). There are rests between the third and fourth notes, and between the fifth and sixth notes.

G^b



A musical staff in treble clef with a key signature of two sharps (F# and C#). The staff contains three notes: G2 (quarter note), B2 (quarter note), and D#3 (half note). A '7' is written below the first note.

