



SIMPLE BLUES

13

C7

C7

C7

C7



F7

F7

C7

C7

23



G7

F7

C

C7

27



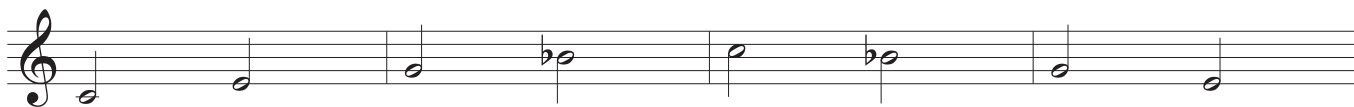
14

C7

C7

C7

C7



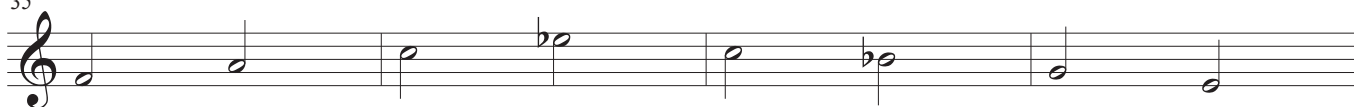
F7

F7

C7

C7

35



G7

F7

C

C7

39



15

C7

C7

C7

C7



F7

F7

C7

C7

47



G7

F7

C

C7

51

